



*Specializing in Group Sales*

All Tickets, Inc.  
2460 Lemoine Avenue, Suite #205  
Fort Lee, New Jersey 07024  
800-922-0716  
[www.allticketsinc.com](http://www.allticketsinc.com)

# New Jersey Attractions Directory

## 2014 – 2015

*Offering a wide selection of tours and attractions to enjoy in New Jersey.  
Each is unique and is sure to enhance your New Jersey experience.*

### ***Please note the following:***

- All Tour and Attraction pricing are subject to change and availability
- Seating and entrance capacity change from site to site
- All are property licensed and maintain proper NYC and/or Coast Guard Certifications
- ADA (Handicap) accessibility varies from site to site
- Some Tour & Attraction operators can facilitate special requests
- Where prices are listed, they are all-inclusive
- Gratuities, if any, are at will
- We always will provide the best possible pricing to Groups
- You will receive comps when available
- **Always feel free to ask for clarification and details. All Tickets will work on your behalf obtaining information specific to your group for a smooth tour experience: 800 922-0716**

## New Jersey Attractions – Table of Contents

### Architectural/Historic

Fort Lee Historic Park	8
------------------------	---

---

### Art

Grounds for Sculpture	10
-----------------------	----

---

### Exhibition

Adventure Aquarium	1
--------------------	---

---

Liberty Science Center	14
------------------------	----

---

Medieval Times	16
----------------	----

---

### Museum

Aviation Hall of Fame of New Jersey	4
-------------------------------------	---

---

Ellis Island Immigration Museum	7
---------------------------------	---

---

Montclair Art Museum	17
----------------------	----

---

Morris Museum	18
---------------	----

---

Newark Museum	20
---------------	----

---

Princeton University Art Museum	24
---------------------------------	----

---

Red Mill Museum Village	25
-------------------------	----

---

Statue of Liberty	28
-------------------	----

---

Thomas Edison Center at Menlo Park	29
------------------------------------	----

---

### Nature/Recreation

Echo Lake Stables	6
-------------------	---

---

Hackensack Riverkeeper, Inc.	11
------------------------------	----

---

Lakota Wolf Preserve	13
----------------------	----

---

### NJ Touring Resources

Google Maps, NYC	9
------------------	---

---

Visit NJ	30
----------	----

---

### Park/Garden

Liberty State Park	15
--------------------	----

---

## **New Jersey Attractions – Table of Contents**

Palisade Interstate Park	21
Sayen House & Gardens	26
Skylands Manor & The New Jersey Botanical Garden	27

### **Performing Arts**

Hudson Shakespeare Company	12
New Jersey Performing Arts Center (NJPAC)	19
Paper Mill Play House	22
Park Performing Arts Center	23

### **Seashore**

Asbury Park	2
Atlantic City	3
Cape May	5
Wetlands Institute	31
Wildwood & Wildwood Crest	32



## Adventure Aquarium

<http://www.adventureaquarium.com/>

**Address:** 1 Riverside Drive  
Camden, New Jersey

**Google Map** <http://g.co/maps/5vv4x>

If you're looking for a fun aquatic adventure then the aptly named *Adventure Aquarium* is just the ticket. Enter the Shark Realm and surround yourself with those razor-teethed, finned creatures that inspire fear and awe in all of us or take a stroll to the West African River Experience where you'll meet hippos up and close personal. There's the 4D Theater for kids, a rain forest waterfall and a wealth of exotic creatures. At the Interactive Inlet, you can safely touch and pickup various water dwellers including lobsters.

There are various unique adventures offered where you can get very close to many of our fine finned friends by getting in the water with them. You even can swim with the sharks! The Adventure Aquarium in New Jersey instantly will transport you thousands of miles away.

The aquarium welcomes groups with advanced notice.



## Asbury Park

<http://www.cityofasburypark.com/>

**Address:**

Asbury Park, New Jersey

**Google Map** <http://g.co/maps/zzwmj>

Asbury Park is a wonderful oceanside community where visitors can enjoy sandy beaches, great dining and wonderful shops. There's an active nightlife that features all sorts of music, from pop to hip-hop and from jazz to rap. Various art galleries, quaint theatres and interesting local museums are all a part of the Asbury Park experience. And remember, Atlantic City is not the only seaside town with a boardwalk. The boardwalk at Asbury Park is loaded with unique shops, enticing eating establishments, great nightspots and a full concert venue. Take the family, travel with the one special person in your life or go with a group of friends—Asbury Park is waiting to welcome you.



## Atlantic City

<http://www.atlanticcitynj.com/>

**Address:**

Atlantic City, New Jersey

**Google Map** <http://g.co/maps/ehvkn>

In Atlantic City you can do just about everything that you can do in Las Vegas, plus more. (Vegas doesn't have a beach or an ocean!) Atlantic City is a place where you can get lost in some of the best ways. Spend the day in one of its world-class casinos, enjoying table games, slots, great food and top entertainers. Or walk the vast boardwalk, taking in the sweet ocean breeze, beckoning horizon and diverse shops. Or maybe you'd like to lounge on the beach, swim in the ocean and go tide pooling for small saltwater creatures. Stay in your room, take a moonlight stroll or ride a bike. It's all up to you. There's no limit of entertainment choices and your palate may be pleased at a diverse collection of restaurants. Atlantic City is just 2 hours from the Great White Way but it's a whole other world.



## Aviation Hall of Fame of New Jersey

<http://www.njahof.org/index.htm>

**Address:** 400 Fred Wehran Drive  
Teterboro, NJ 07608

**Google Map** <http://g.co/maps/k5xpy>

The Aviation Hall of Fame of New Jersey is dedicated to preserving the state's connections to two centuries of aviation and space history. The Garden State's rich heritage is celebrated through museum displays, educational programs and special events. Exhibits include the powerful rocket engine that pushed the X-15 to set astronomical speed and height records and the first American hovercraft, which was invented by Charles Fletcher. Models of airplanes, restored full-sized aircraft and various displays are on hand to stimulate your curiosity.



## Cape May

<http://www.capemay.com/>

**Address:**

Cape May, New Jersey

**Google Map** <http://g.co/maps/uudp6>

Cape May is a timeless, quaint beachfront community that welcomes visitors to its saltwater shores and folksy shops. Rest, relax and enjoy the sun and surf at one of the town's many beaches; parasailing and jet skis await the adventurous. Take a whale watching tour or fish from aboard one of the charter boats. Rent a bicycle or take a carriage or trolley tour to see the grand Victorian homes. Rainy days can be busy days for Cape May visitors, too, for there's always something to do. Visit a local winery, take a self-guided tour of the Cape May Lighthouse, learn about stick style architecture at the Emien Physick Estate, or pamper yourself with a day at the spa.

Cape May has much to offer year-round. Music festivals, house tours, Christmas in Cape May, wine tastings, and themed weekends such as the Victorian Weekend, the Sherlock Holmes Weekend, and the Looking Glass Mystery Weekend are just some of the offerings to entice visitors to this wonderful town.





## Echo Lake Stables

<http://www.echolakestables.com/main.htm>

**Address:** 55 Blakely Lane  
Newfoundland, New Jersey

**Google Map** <http://g.co/maps/v794t>

For a horse ride or for a hayride, make Echo Lake Stables your destination. Take a trail ride along the same paths that Native Americans followed. You'll commune with nature's visage as found in the woods, rivers and grassy fields. The weekend night rides are very popular and include a 90-minute trail ride followed by a BBQ, music and a whole lot of fun. If you'd rather be carted around, sign up for a hayride. Hayrides are a great group event for up to 22 people. To enhance the experience, add on a BBQ or bonfire. Echo Lake Stables has an array of trained horses and ponies, many of which have appeared in the movies. Outdoor fun is yours at Echo Lake Stables.



## Ellis Island Immigration Museum

<http://www.nps.gov/elis/index.htm> [http://www.statueofliberty.org/Ellis\\_Museum.html](http://www.statueofliberty.org/Ellis_Museum.html)

[http://www.ellisland.org/genealogy/ellis\\_island\\_visiting.asp](http://www.ellisland.org/genealogy/ellis_island_visiting.asp)

**Address:** Ellis Island  
New Jersey/New York

**Google Map** <http://g.co/maps/tyhyf>

From 1892 through 1954, 12 million immigrants passed through Ellis Island. Three floors comprise this comprehensive museum that documents and preserves the story of the American immigrant. Visitors may decide to tour the museum on their own, take a tour offered by a knowledgeable park ranger, or rent the Audio Tour available in nine different languages. Be sure to set aside time to see the free film *Island of Hope, Island of Tears*, which focuses on the immigrant experience. If time allows, you can search for your ancestor in the Ellis Island database of immigration manifests.

Inspirational, informative and immense in scope, the Ellis Island Immigration Museum is an important resource for every American.



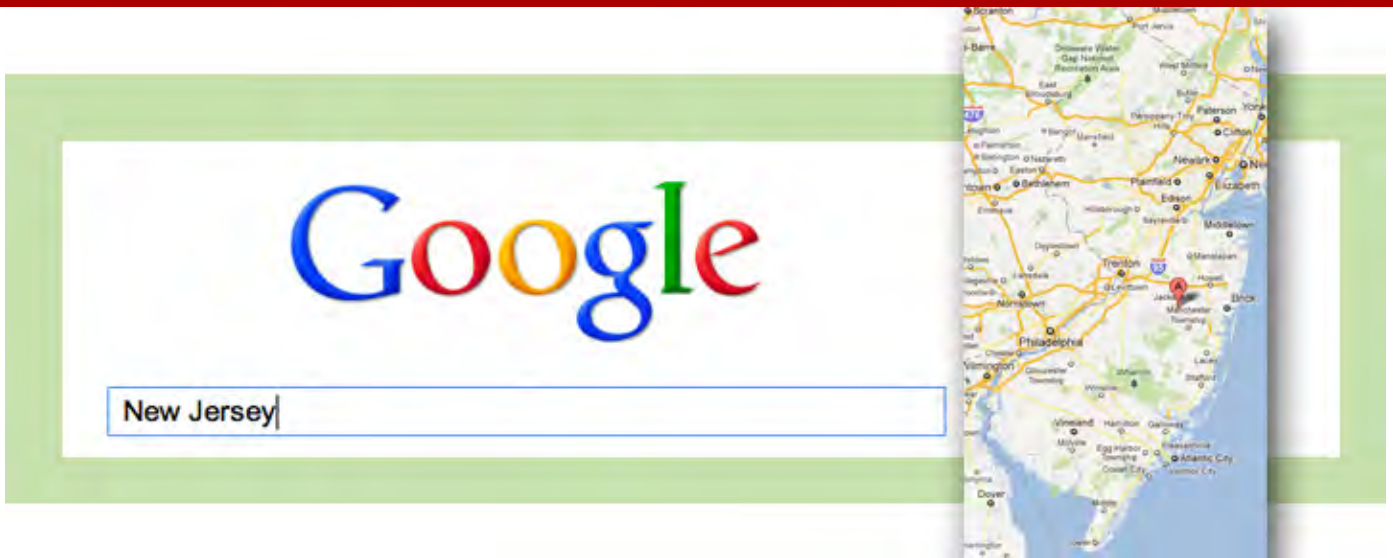
## Fort Lee Historic Park

<http://www.njpalisades.org/flhp.htm>

**Address:** Burdett's Landing & Mount Constitution, Top of the Palisades on Hudson Terrace  
Fort Lee, New Jersey

**Google Map** <http://g.co/maps/ukx7h>

Set on 33 acres, Fort Lee Historic Park serves as a memorial to the American Revolution. Fort Lee was one of the essential fortifications that General George Washington ordered be built to defend New York and its harbors. Mount Constitution, the site of the fort, stands 250 feet above Burdett's Landing, which was used to ship supplies to troops during the war. The north side of Fort Lee Historic Park offers visitors magnificent views of the George Washington Bridge, the Hudson River, and the skyline of upper Manhattan. Make your way across serpentine pathways on the south end where you'll discover a reconstructed blockhouse, gun batteries and firing steps. Historically accurate Revolutionary War soldiers' and officers' huts and a well, woodshed, and baking oven serve as the backdrop for interesting and informative interpretive programs. An 11,000 square foot, two-floor visitor's center replete with an auditorium, gift shop and numerous historic displays serves as a wonderful educational resource.



## Google Maps, NYC

<http://maps.google.com/>

**Address:**

### Google Map

Google Maps, which is a free mapping and directions service from Google, can help get you anywhere and everywhere. No matter where you want to go in New Jersey, you're bound to find it using Google Maps. Plus, this free service allows you to access reviews of specific businesses within the area you are traveling. If you're exploring the Garden State, be sure you're accompanied by Google Maps.



## Grounds for Sculpture

<http://www.groundsfor Sculpture.org/>

**Address:** 18 Fairgrounds Road  
Hamilton, New Jersey

**Google Map** <http://g.co/maps/sjt7s>

Grounds for Sculpture is located on 45 acres that serve as the bucolic setting for over 250 works of contemporary sculpture by well-known and emerging American and international artists. Workshops for adults and children, tours for adults, children, and toddlers, and touch tours for the blind can do much to make the visit to the Grounds for Sculpture even more rewarding and enjoyable. Groups may book a guided tour, while individuals and families may take a self-guided tour.

Special exhibitions and exciting events are held either outdoors or in the indoor exhibition/lecture facility throughout the year. Photography workshops, musical concerts, dance troupes, and wine-tasting dinners at the renowned Rat's Restaurant are but a few of the many opportunities offered to visitors. For a full listing and description of the events, be sure to check the Grounds for Sculpture website.



## Hackensack Riverkeeper, Inc.

<http://www.hackensackriverkeeper.org/ecocruise.html>

**Address:** 231 Main Street (office)  
Hackensack, New Jersey

### Google Map

Hackensack Riverkeeper, Inc. is an independent, nongovernmental advocate for the Hackensack River. Led by Captain Bill Sheehan, a dedicated conservationist, the group offers eco-cruises—river experiences that teach visitors an appreciation for the natural beauty and recreational resources of the lower Hackensack River watershed. Take a trip on the specially-rigged pontoon boats through the wildlife-rich estuary known as the Meadowlands, boat up the Hackensack through Bergen County, or explore the mouth of the Hackensack River and regions beyond in Newark Bay.

In addition to their pontoon boats, the organization has a fleet of 26 canoes and kayaks for tours and your paddling pleasure. From the end of April to the end of October, paddle along the river on your own or take an informative guided water trek to learn about the wildlife and the natural and human events that have had an influence on the Hackensack River region.

# Hudson Shakespeare Company



## Hudson Shakespeare Company

<http://www.hudsonshakespeare.org/>

**Address:**

Jersey City & Hoboken, New Jersey

**Google Map**

The Hudson Shakespeare Company is devoted to performing the works of the great English bard and, on occasion, a more contemporary work in a variety of outdoor and indoor venues. Utilizing some of the finest young and experienced talent in the tri-state area, the theater company interprets and produces a variety of Shakespeare's plays. Traditional and nontraditional productions are offered.

Van Vorst Park at the corner of Montgomery Street & Jersey Avenue serves as the theatrical venue for Jersey City. In Hoboken, there are two settings: Shipyard Park at 13th Street and Constitution Way, and Frank Sinatra Park at Sinatra Drive, off 4th and River Steets.

Comedy, tragedy, romance or history—the great playwright's tales continue to be enjoyed through the ages. So, be sure to catch some Shakespeare the next time the Hudson Shakespeare Company is in town.



## Lakota Wolf Preserve

<http://www.lakotawolf.com>

**Address:** 89 Mt. Pleasant Road  
Columbia, New Jersey 07832

**Google Map** <http://g.co/maps/8e8kw>

Winner of the New Jersey Governor's Environmental Tourism Award, the Lakota Wolf Preserve offers visitors an opportunity to watch and listen to packs of Tundra, Timber and Arctic wolves in their natural surroundings. A scenic walk leads to the Preserve where visitors enter an observation area located in the center of four packs of wolves. Knowledgeable staff will educate you as to the true behavior of the wolf—the social structure of the packs, their eating habits, their interaction with humans, etc. Your questions are welcome.

Wolf watches are presented twice daily and last for 1.5 hours. The times of the tours vary with the season, so check the website for current information. Because of the rough terrain, proper footwear is a must.





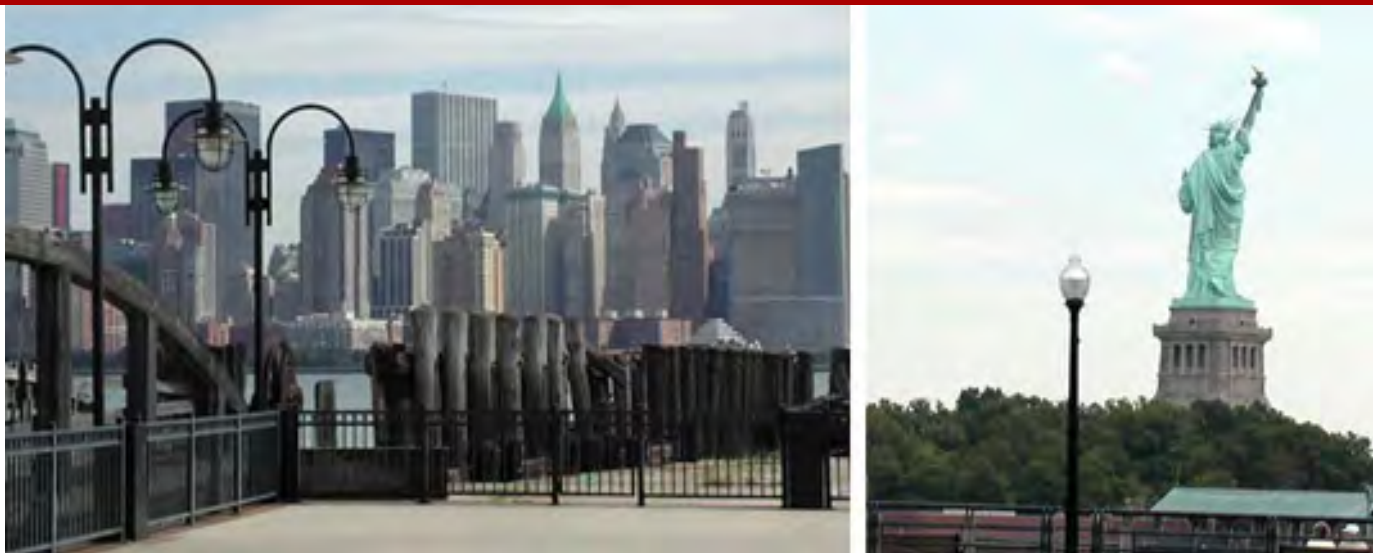
## Liberty Science Center

<http://www.lsc.org/>

**Address:** Liberty State Park, 222 Jersey City Blvd.  
Jersey City, New Jersey

**Google Map** <http://g.co/maps/xaedy>

Chosen as one of the top 10 science centers by Parents Magazine, Liberty Science Center is a great place to explore, interact and learn. There are nine permanent exhibitions that connect science to our daily lives and numerous exciting programs that bring science to life. In Our Hudson Home you'll learn about the delicate and complex relationship between human beings and nature in the region, while Skyscraper! offers amazing and interesting information about these overly tall buildings. Microbes, humans, disease and our efforts to control those things that threaten our health are revealed and explored in Infection Connection. The Liberty Science Center also features the largest IMAX Dome Theater in the country. This state-of-the-art facility connects science to each and every aspect of our lives. Bring the kids or go with a group and become a part of this exciting institution.



## Liberty State Park

<http://www.state.nj.us/dep/parksandforests/parks/liberty.html>

[http://www.state.nj.us/dep/parksandforests/virtual\\_tours/liberty\\_state\\_park.html](http://www.state.nj.us/dep/parksandforests/virtual_tours/liberty_state_park.html)

**Address:** 222 Jersey City Blvd.  
Jersey City, New Jersey

**Google Map** <http://g.co/maps/5dhxy>

Set along the banks of the Hudson River in northern metropolitan New Jersey, Liberty State Park is known as a "Green Oasis" offering stunning views of the New York skyline, Statue of Liberty and Ellis Island. At the north end of the complex is one of the finest examples of railroad station architecture—the historic Central Railroad of New Jersey Terminal (CRRNJ). After passing through Ellis Island, it was here that immigrants boarded the trains that would take them to their destinations throughout the US.

Enjoy a picnic in the park, visit the park's environmental and historic Interpretive Center, sign up for a guided kayak or canoe tour, walk, bike, run, jog or inline skate, or make use of the fitness trail along Freedom Way—you can do it all while reveling in the magnificence of the area.

Liberty Park is the only spot in New Jersey offering ferry service to the Statute of Liberty and Ellis Island.



## Medieval Times

<http://www.medievaltimes.com/lyndhurst.aspx>

**Address:** 149 Polito Ave.  
Lyndhurst, New Jersey

**Google Map** <http://g.co/maps/rbt3r>

It's dinner theatre in the Middle Ages as created by Medieval Times. Food, frivolity and fun are the order of the night as you enter through the Hall of Arms' huge doors. Once inside, you'll find yourself transported back to the trappings of the 11th century as King Philippe and his daughter-in-law, Princess Leonore, hold court during a four-course feast that's...well...fit for a king.

You and your family or group are the honored guests of the night, and, as such, are treated to a rousing jousting tournament, amazing horsemanship, and falconry. Indeed, the medieval tournament features special effects that make you feel as if you're watching a Hollywood movie. Go back to a time and place that is far away, to snowy encounters in the deep woods and to the days of knights, chivalry and love. You'll have the best time at Medieval Times.



## Montclair Art Museum

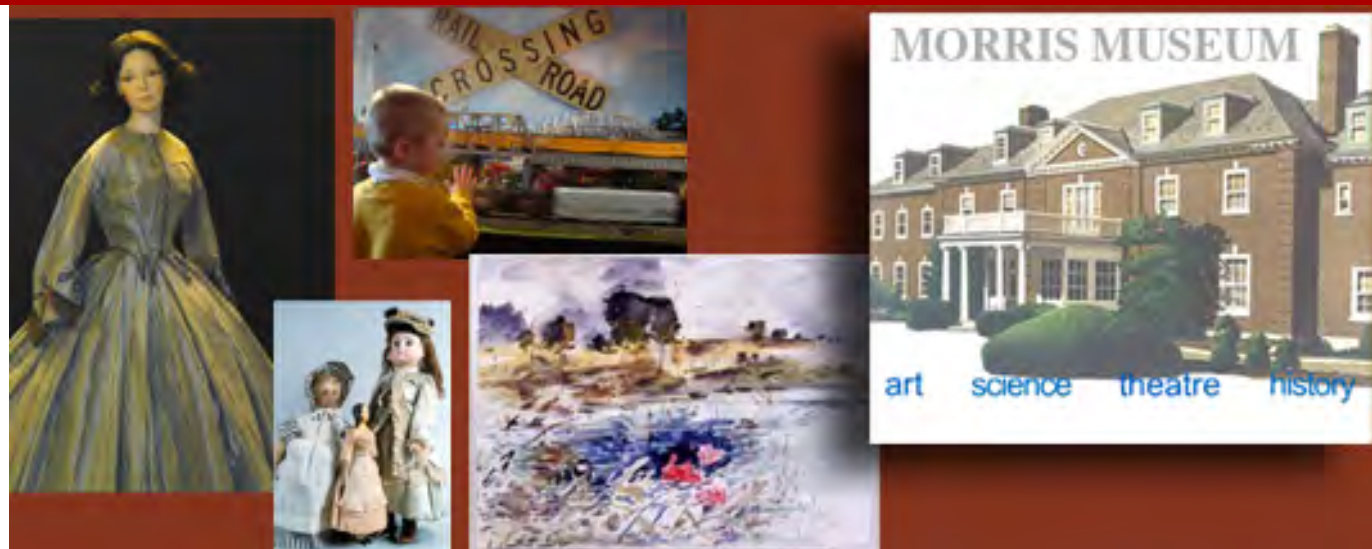
<http://www.montclair-art.com/>

**Address:** 3 South Mountain Avenue  
Montclair, New Jersey

**Google Map** <http://g.co/maps/ttdr5>

The Montclair Art Museum offers exhibits from groundbreaking American and Native American artists such as Andy Warhol, Robert Mapplethorpe and Dan Funderburg. The mid-sized, regional museum, which has a history that spans close to a century, welcomes diverse visions that create a unique and meaningful message. The exhibitions and educational programs seek to link art to contemporary life in a global context.

The museum has more than 7,500 items in its Native American, 18th and 19th century American, and modern and contemporary art collections. Various educational programs aimed at groups, families, teens and educators are offered through the museum's Yard School of Arts. The Montclair Art Museum is a true treasure serving the region.



## Morris Museum

<http://www.morrismuseum.org/>

**Address:** 6 Normandy Heights Road  
Morristown, New Jersey

**Google Map** <http://g.co/maps/jnfwe>

The Morris Museum, with a collection of close to 50,000 objects, offers programs, exhibitions and performances focusing on art, theatre, science and history. Highlights include costumes and textiles, fine art, decorative art, dolls and toys, natural science, geology and paleontology, and anthropology. There are numerous permanent and special exhibitions plus an array of educational courses and performances for people of all ages. The museum includes a Mineralogical Society and Astronomical Society. With its unique range of offerings, the Morris Museum is a one-of-a-kind experience and a great resource for the region.



## New Jersey Performing Arts Center (NJPAC)

<http://www.njpac.org/>

**Address:** 1 Center Street  
Newark, NJ 07102

**Google Map** <http://g.co/maps/g676q>

Home of the New Jersey Symphony Orchestra, New Jersey Performing Arts Center serves as the performance venue for a renowned and diverse group of performers. Classical, pop, rock and jazz artists, musical theater and cabaret, classical and modern dance companies—all have found a home on NJPAC's stage. In addition to the New Jersey Symphony, among those who have appeared in the hall are: the Boston Symphony Orchestra, Yo-Yo Ma, Ballet Nacional de Cuba, Lauryn Hill, Alvin Ailey American Dance Theater, Chicago Symphony Orchestra, Twyla Tharp Dance, Dance Theatre of Harlem, the Israel Philharmonic, the Berlin State Opera Orchestra, the Royal Danish Ballet; Bill T. Jones, Itzhak Perlman, the Vienna Boys Choir, Midori, Sting, and Audra McDonald.

The *NY Times* music critic named Prudential Hall one of the "world's greatest concert halls." Since Prudential Hall opened in 1997, over five million people have enjoyed NJPAC performances.



## Newark Museum

<http://www.newarkmuseum.org/>

**Address:** 49 Washington Street  
Newark, NJ 07102-3176

**Google Map** <http://g.co/maps/znd4f>

The Newark Museum Offers visitors a chance view fine arts from around the world, investigate the heavens, and explore nature's secrets. New Jersey's largest museum has 80 galleries of world-class collections that include African Art, American Art, Art of the Americas (Native North American art and Latin American Art), Arts of Asian, and both Classical and Contemporary Art.

Explore Saturn or reach for the stars in the Dreyfuss Planetarium. After its recent upgrade, the "new" planetarium is state-of-the-art with its addition of "Full Dome" digital video, surround sound, and exciting new programs.

The Dynamic Earth: Revealing Nature's Secrets will help you peek inside the Earth's core, discover why earthquakes shake, see a volcano "blow its top", learn about hungry lions and polar bears, and even teach you about bats and bees...along with other of nature's creatures.



## Palisade Interstate Park

<http://www.njpalisades.org/>

**Address:**

New Jersey

**Google Map** <http://g.co/maps/52kv6>

Located in northeastern Bergen County, New Jersey, Palisades Interstate Park occupies 2,500 of the more than 100,000 acres of historic sites and parks maintained by the Palisades Interstate Commission. Natural, sprawling and variegated, the area in New Jersey measures 12 miles in length and approximately mile in width bordering the banks of the Hudson River. Take a ride on the scenic drive along the water, hike on over 30 miles of trails and take-in majestic scenic overlooks. You can picnic, boat and visit historic sites and a nature sanctuary. The Palisades Interstate Park is a jewel waiting for you and your family, friends or group. A visit is just a few miles away.





## Paper Mill Play House

<http://www.papermill.org/>

**Address:** 22 Brookside Drive  
Millburn, New Jersey

**Google Map** <http://g.co/maps/2pr2a>

The Paper Mill Play House presents a full range of some of the best professional shows outside of New York City. With a focus on American musical theatre and a devotion to fostering the best art and educational programs possible, the playhouse's offerings include a full season of plays, numerous educational programs for kids, teens and adults and various outreach programs. Although the primary focus is on musicals, there also are numerous comedies and dramas offered each season. Their children's theatre presentations are perfect for kids from three through 12. The Paper Mill Play House is known for its quality professional shows, fine production elements and talented, skilled performers. Past show titles include Little Shop of Horrors, 1776, Oklahoma!, The Importance of Being Earnest and Lost in Yonkers. Check out the playhouse for their next must see show.



Park Performing Arts Center

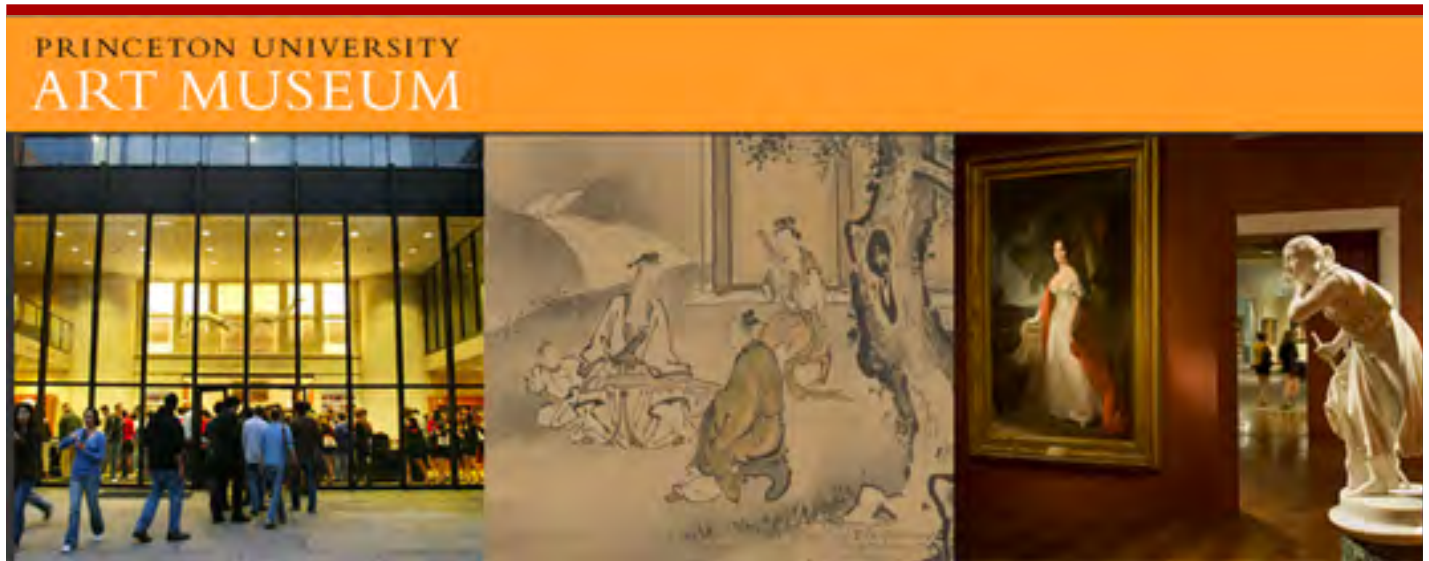
## Park Performing Arts Center

<http://www.parkpac.org/>

**Address:** 560 32nd Street  
Union City, New Jersey

**Google Map** <http://g.co/maps/rbvzk>

The Park Performing Arts Center is dedicated to creating and presenting the best arts and educational experiences possible for its community and especially for children. Camps, workshops, classes and performances are all a part of the Park Performing Arts Center experience. There are special holiday presentations connected to the community and region and an array of concerts that include music, comedy and children's theater. The Park Performing Arts Center is a true cultural resource for Union City, New Jersey.



## Princeton University Art Museum

<http://artmuseum.princeton.edu/>

**Address:** University Campus  
Princeton, New Jersey

**Google Map** <http://g.co/maps/6nsft>

Established in 1882, the Princeton University Art Museum includes numerous collections with the majority of art originating from the Mediterranean regions, Western Europe, China, the United States, and Latin America. The museum focus is on ensuring that the visual arts are a vital part of the lives of Princeton University students. Additionally, it serves as a conduit to local, regional and worldwide communities, connecting them to the museum's intellectual and artistic resources. Exhibitions at the Princeton University Art Museum have an international flavor, are thought provoking and are linked to a range of subject matter, including cultural history, anthropology and the visual arts. A visit to the Princeton University Art Museum will expand your intellectual and artistic horizons.



## Red Mill Museum Village

<http://www.theredmill.org>

**Address:** 56 Main Street  
Clinton, New Jersey

**Google Map** <http://g.co/maps/dndpq>

Built around 1810, the Red Mill has a storied past. In its inception, it processed wool, but competition from lower-priced foreign cloth led to the demise of the business. As the mill passed from owner to owner, its function was to change. It was retrofitted to grind feed and flour, it sold chestnut wood for rails, and later produced peach baskets. At one point in its history, the site was split into a mill and a quarry. In 1892, it housed the Clinton Illuminating and Water Co. that provided electricity for Clinton's street lamps. When the mill changed to processing graphite, it became known as the "Black Mill," reflective of the cloud of greasy black dust it created. In response to public outcry, the mill changed to grinding talc, and the mill's nickname evolved to the "White Mill."

Today, The Red Mill Museum and the other building on the grounds invite visitors to glimpse into this varied past. From April to October, the museum welcomes visitors Tuesday through Sunday.



## Sayen House & Gardens

<http://www.sayengardens.com>

**Address:** 155 Hughes Drive  
Hamilton, New Jersey

**Google Map** <http://g.co/maps/gxft6>

The history aficionado, nature enthusiast and garden lover will be enthralled by the atmosphere and environs of Sayen House and Gardens. In 1912, Frederick Sayen, a world traveler and avid gardner, purchased the land on which Sayen House was built. Over the years, he filled his gardens with plants and flowers from around the world. Today, there are more than 1,000 azaleas, 500 rhododendrons, and over 250,000 flowering bulbs in the beautifully-tended gardens open to public display. The beginning of the annual Azalea Festival begins on Mother's Day.

Annuals and perennials fill the garden beds throughout the year complementing the walking trails, fish ponds and gazebos the grace the site. The grounds and the gardens can be used for catered events. Located in historic Hamilton Square, the Sayen House and Gardens is a visual, natural and historic treasure.



## Skylands Manor & The New Jersey Botanical Garden

<http://www.njbg.org/>

**Address:** 2 Morris Road  
Ringwood, New Jersey

**Google Map** <http://g.co/maps/gj68w>

Stroll through carefully maintained formal gardens, wander along a wooded path, and set your sites on unusual and exotic plant life. At the New Jersey Botanical Garden, 96 acres of specialty gardens surrounded by 1000 acres of woodlands await you.

Originally a private residence, Skylands Manor was designed by John Russell Pope, the eminent American architect who designed the National Archives and the National Gallery of Art. Although built in the 1920's, this Tudor revival mansion intentionally was made to centuries old. In 1966, the State of New Jersey bought Skylands from owner Clarence MacKenzie Lewis for the purpose of establishing a botanical garden.

Free garden tours of the gardens and Manor House are available. Reservations are needed for guided group tours. Throughout the year, special exhibits, workshops, and events are offered to the public, including the annual holiday open house and champagne and candlelight tours.

Not like the brazen giant of Greek fame,  
 With conquering limbs astride from land to land;  
 Here at our sea-washed, sunset gates shall stand  
 A mighty woman with a torch, whose flame  
 Is the imprisoned lightning, and her name  
 Mother of Exiles. From her beacon-hand  
 Glows world-wide welcome; her mild eyes command  
 The air-bridged harbor that twin cities frame.  
 "Keep, ancient lands, your storied pomp!" cries she  
 With silent lips. "Give me your tired, your poor,  
 Your huddled masses yearning to breathe free,  
 The wretched refuse of your teeming shore.  
 Send these, the homeless, tempest-tost to me,  
 I lift my lamp beside the golden door!"



## Statue of Liberty

<http://www.nps.gov/stli/index.htm>

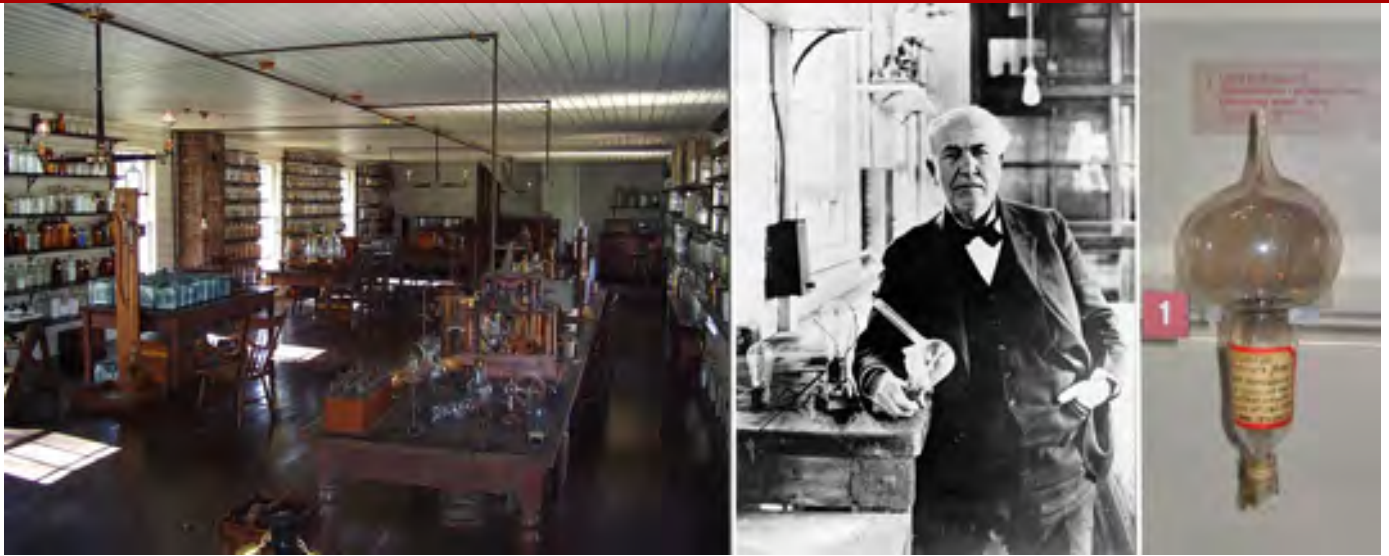
[http://www.statueofliberty.org/Statue\\_History.html](http://www.statueofliberty.org/Statue_History.html)

**Address:** Liberty Island  
 New Jersey/New York

**Google Map** <http://g.co/maps/wr4r9>

The Statue of Liberty, designed by the French artist Frederic-Auguste Bartholdi, was a gift from the people of France to the people of the United States. Finished in 1884 and dedicated in 1886, Lady Liberty was designated a National Monument in 1924.

Those traveling on the waterways that surround the city can see the Statue of Liberty from various vantage points. Visitors who prefer to visit Liberty Island can take the ferry from either New Jersey or New York. Starting October 28, 2011, the interior spaces of the statue will be closed for a year-long renovation. The island remains open to visitors during that time. Since renovations are on the interior only, visitors will continue to be treated to spectacular views of Lady Liberty, the pedestal and the old fort on which it sits, and the surrounding harbor. The number of visitors each day is limited, so it is recommended tickets be purchased ahead of time.



## Thomas Edison Center at Menlo Park

<http://www.menloparkmuseum.org/>

**Address:** 37 Christie Street  
Edison, New Jersey

**Google Map** <http://g.co/maps/3959v>

Thomas Edison, one of the most famous inventors who ever lived and certainly one of the most prolific, set up his experimental complex at Menlo Park, New Jersey in 1876. At the facility, he was to create inventions that changed the world. The incandescent light bulb, movie camera, phonograph and devices related to power generation are among his over 400 patents.

The Thomas Edison Center at Menlo Park serves as a historical resource, museum and educational institution that celebrate Edison's life and accomplishments. The center is scheduled to be closed for renovation until late 2011 or early 2012 when it will reopen as a totally reinvented resource. For updates, please check the museum website.





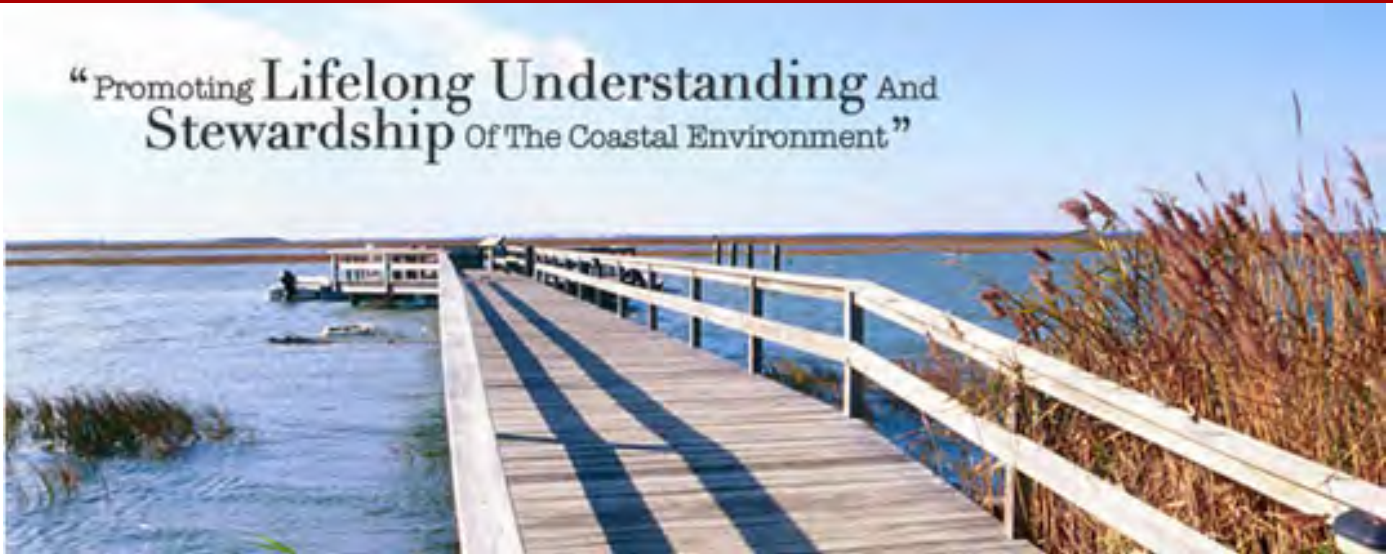
## Visit NJ

<http://www.visitnj.org/>

**Address:**

### Google Map

Consider this command central for visitors to the State of New Jersey. Maintained by the state's Division of Travel and Tourism, the site features destinations organized by six different areas in the state. Request or download free guides, get transportation information, and view suggestions of sites to see and things to do. Visiting New Jersey? This is a great place to start.



## Wetlands Institute

<http://wetlandsinstitute.org/>

**Address:** 1075 Stone Harbor Blvd.  
Stone Harbor, New Jersey

**Google Map** <http://g.co/maps/55m24>

The mission of the Wetlands Institute is simple put: "Our very lives depend on sustaining healthy wetlands and coastal ecosystems. They cannot be taken for granted. They must be valued and protected."

To that end, the Institute offers a variety of activities and workshops throughout the summer to appeal to children and adults alike: guided tours, back bay boat rides, kayaking, live animal shows, family entertainment and guided beach and dune walks. From these enriching aquatic and beach experiences, visitors discover a new appreciation of nature, the environment and our connection to both. The winter is reserved for self-guided tours.

When at the institute, be sure to include Marshview Hall, the Terrapin Station, the Diller Coastal Exhibit Building, and the Observation Tower. All will help to explain why we have such an imperative to value and protect our wetlands.



## Wildwood & Wildwood Crest

<http://www.wildwoodsny.com/>

**Address:**

Wildwood, New Jersey

**Google Map** <http://g.co/maps/t4jn4>

The Wildwoods actually are adjacent beach communities—North Wildwood, Wildwood and Wildwood Crest—that welcome seasonal visitors with open arms. The beaches are renowned for their powdery-white sand and have won numerous awards, among them "Best Beaches in New Jersey," "Top 10 Family Beaches," and "Best Sports Beach." There's always a lot to do in the Wildwoods. Take a boat cruise, go fishing, play a round of golf, tour a local winery, rent a bike, try out one of the three beach-front water parks, compete in arcade games and much more. The rides are fantastic! The Wildwoods boast of not one but six world-class roller coasters. Nightly entertainment abounds and there's a range of restaurants from which you may choose. Rain or shine, you'll find there's always something to do. Any of the New Jersey Wildwoods is a great choice for those who want to do nothing, everything, or maybe something in between.